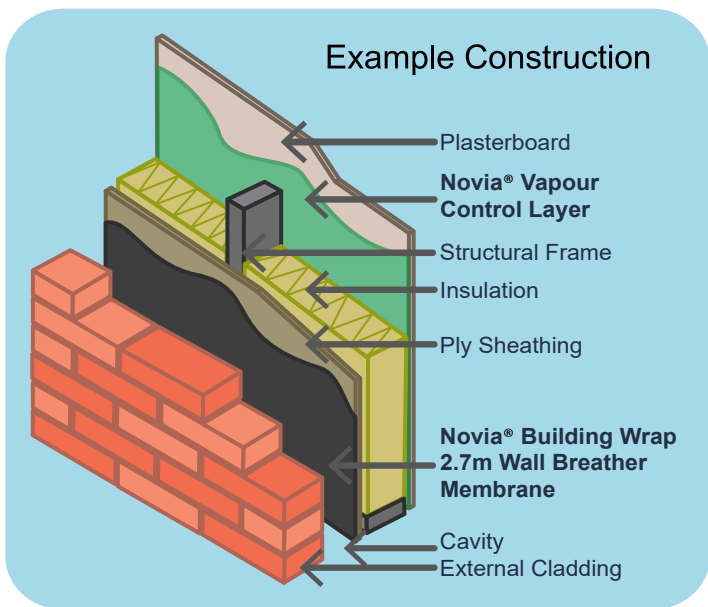


Novia® Building Wrap Wall Breather Membrane is an entry level 2.7m x 100m wall breather membrane. The product is lightweight and designed for use in all insulated wall applications. **Novia® Building Wrap** is a Class W2 water resistant membrane, which meets EN 13859-2 for walls and also has a high air and vapour breathability. It also complies with EN 13501-1 fire classification grade E. **Novia® Building Wrap** is completely black on both sides, with no text or images, except for a 150mm overlap line. It is available in other colours, subject to MOQ and additional lead times.



Key Features:

- Entry grade wall breather
- Class W2 water resistant to EN 13111
- Highly air and vapour open
- Good tensile and nail tear strength
- Grade E (fire) to EN 13501-1
- 3 months UV resistance
- UKCA to EN 13859-2 (walls)
- Ideal for timber frame constructions
- Low cost solution

For high specification wall breather applications we offer **Novia® Black+ Construction Wrap**. It is a 2.7m x 100m, tri-laminate wall breather, which has excellent Class W1 water resistance but still provides high breathability. See datasheet for more product specific information.

	Value	Units	Test Method
Standard Width	2.7	m	
Roll Length	100	m	
Roll Weight	27.5	kg	EN 1849-2
Nominal weight	100	g/m ²	EN 1849-2
Tensile strength MD / CD	240 / 180	N/50mm	EN 12311-1
Elongation MD / CD	85 / 100	%	EN 12311-1
Resistance to tearing MD / CD	135 / 145	N	EN 12310-1
Water vapour resistance, Sd	0.006	m	EN ISO 12572
Resistance to water penetration	W2	Class	EN 13111
Resistance to water penetration (after ageing)	W2	Class	EN 13111
Resistance to air penetration (50Pa)	704	m ³ /m ² /hr	EN 12114
Low temperature stability (no cracking at)	- 60	°C	EN 1109
Reaction to fire	E	Class	EN 11925-2
UV resistance	3 months UV resistant		



Use the QR code to link direct to the product webpage.



NOTE: COSHH safety datasheets available upon request.

Date Published: January 2024. Novia's most recently published datasheet supercedes any previous versions which may still be in circulation.



® Building Wrap
Wall Breather
2.7m x 100m

UK
CA

Installation Guidance for Walls:

Fix **Novia® Building Wrap** to the wall structure; upper layers should overlap lower layers. Work from the bottom moving upwards, using minimum overlaps of 100mm on the horizontal joints. Do not begin a vertical lap joint within 300mm of a corner, and vertical laps should be at least 150mm. Ensure the bottom timber is also protected by an overlap. Fix at suitable intervals with galvanised nails, stainless staplers or similar fixings that will be permanent.

Do not leave the membrane unnecessarily exposed to weathering, high winds, excessive UV etc. as this may cause damage over time. If you leave the membrane exposed for extended periods of time, consider the use of suitable temporary protection materials.

Installation Tapes:

We advise the use of Novia installation tapes as it will greatly improve the installation quality, reduce wind chatter and allow for any unexpected on-site damage to be repaired quickly. We offer **Novia® Breather Membrane Lap Tape (BMLT)**, a single-sided lap tape for basic installations, and for high specification work we offer the optional **Novia® Double-Sided Lap Tape** for use between laps. See product datasheets for product specific information.

Other Notes:

- Ensure that a Novia Air & Vapour Control Layer such as **Novia® 500g, 1000g or 1200g** (virgin grade polythene AVCLs) or **Novia® VC200 Reflective**, is installed on the warm side of the insulation to limit unwanted interstitial condensation. As little as 1% - 3% moisture contamination within the insulation can adversely affect the achieved thermal performance by more than 30%.
- Always handle material carefully to prevent tears and punctures. Repair any on-site damage with Novia tapes.
- All Novia products should be stored horizontally, indoors and out of direct sunlight. External storage must be on a temporary basis. When stored externally, Novia products should be covered and protected from exposure to weather conditions, especially wind, rain, frost and UV. Pallets should not be stacked.

This datasheet represents the latest understanding of the subject. However, it is for the ultimate user to determine suitability of Novia products within specific applications. The advice and information we have provided is general in nature, and is subject to future revision.

Date Published: January 2024. Novia's most recently published datasheet supercedes any previous versions which may still be in circulation.

DS0124_BuildWrap